

3 1761 06990755 8

DS
486
B43Y28
Atlas



Digitized by the Internet Archive
in 2010 with funding from
University of Toronto

THE ANTIQUITIES OF BIDAR

BY

G. YAZDANI, M.A.,

Superintendent of Archaeology, His Highness the Nizam's Dominions.



CALCUTTA

PRINTED AT THE BAPTIST MISSION PRESS

1917.

Yordan Khalan
The antiquities of Bidun

D 4

486

134.572

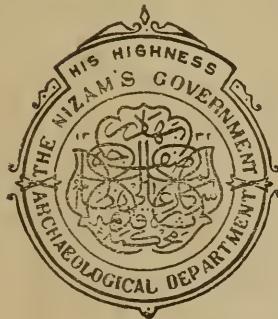
MS. No. 191

THE ANTIQUITIES OF BIDAR

BY

G. YAZDANI, M.A.,

Superintendent of Archæology, His Highness the Nizam's Dominions.



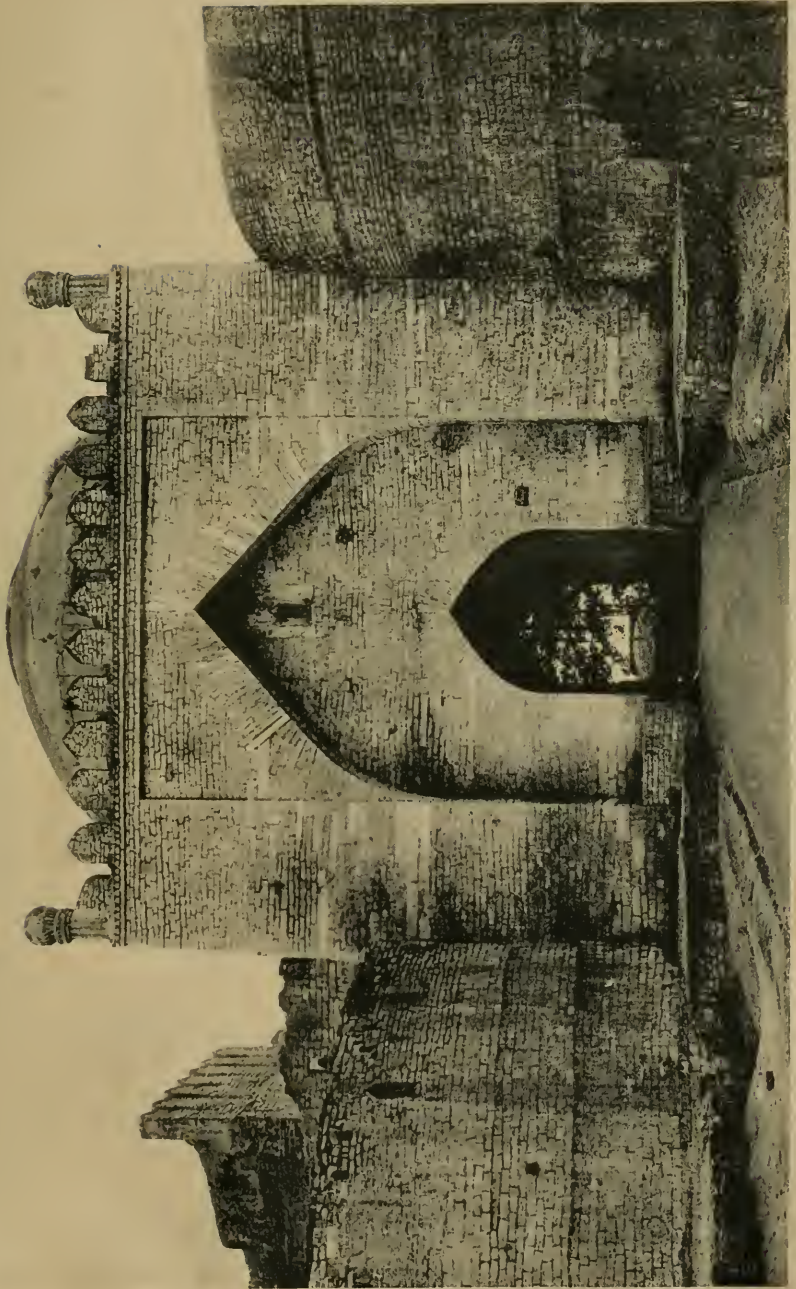
CALCUTTA

PRINTED AT THE BAPTIST MISSION PRESS

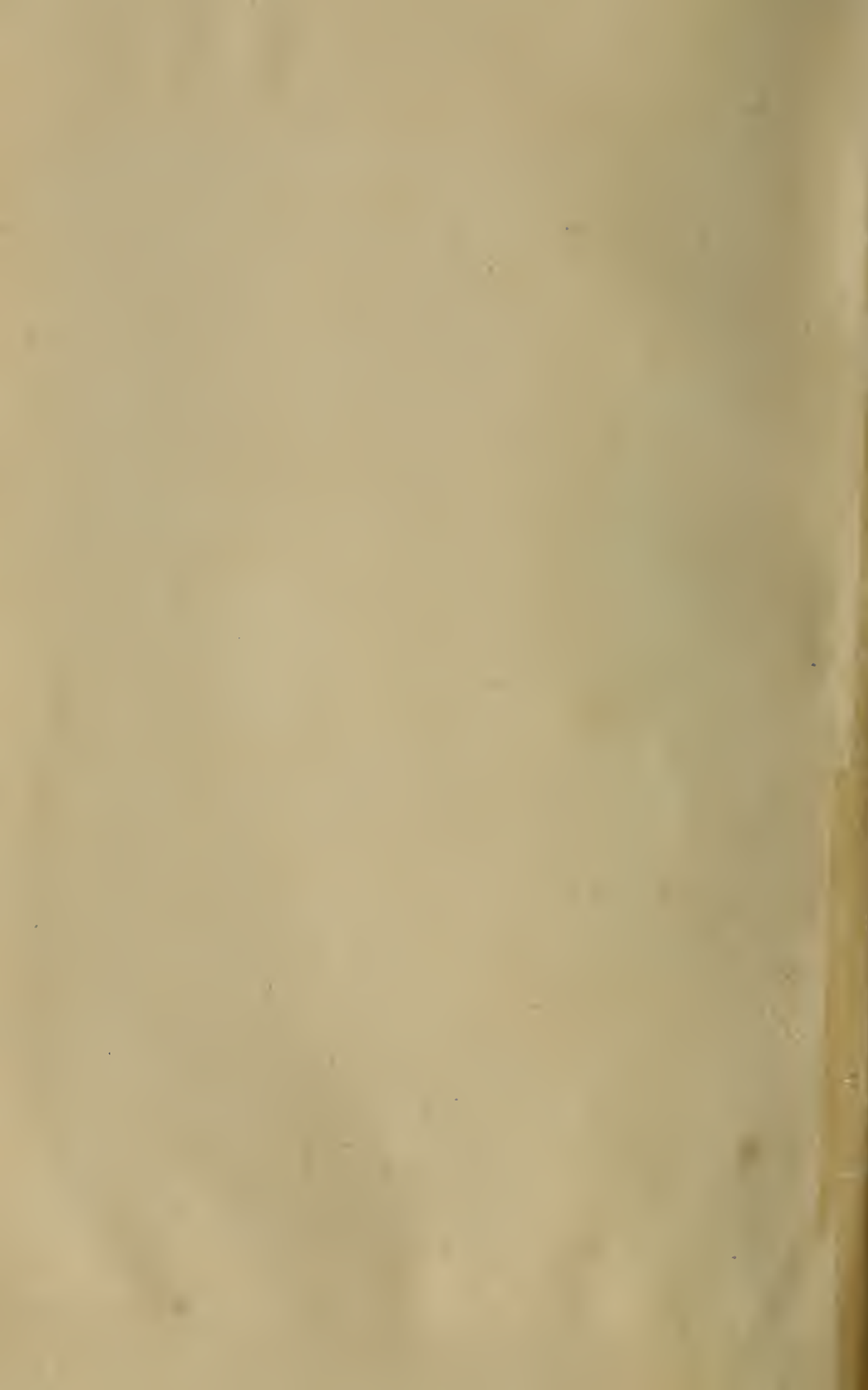
1917.

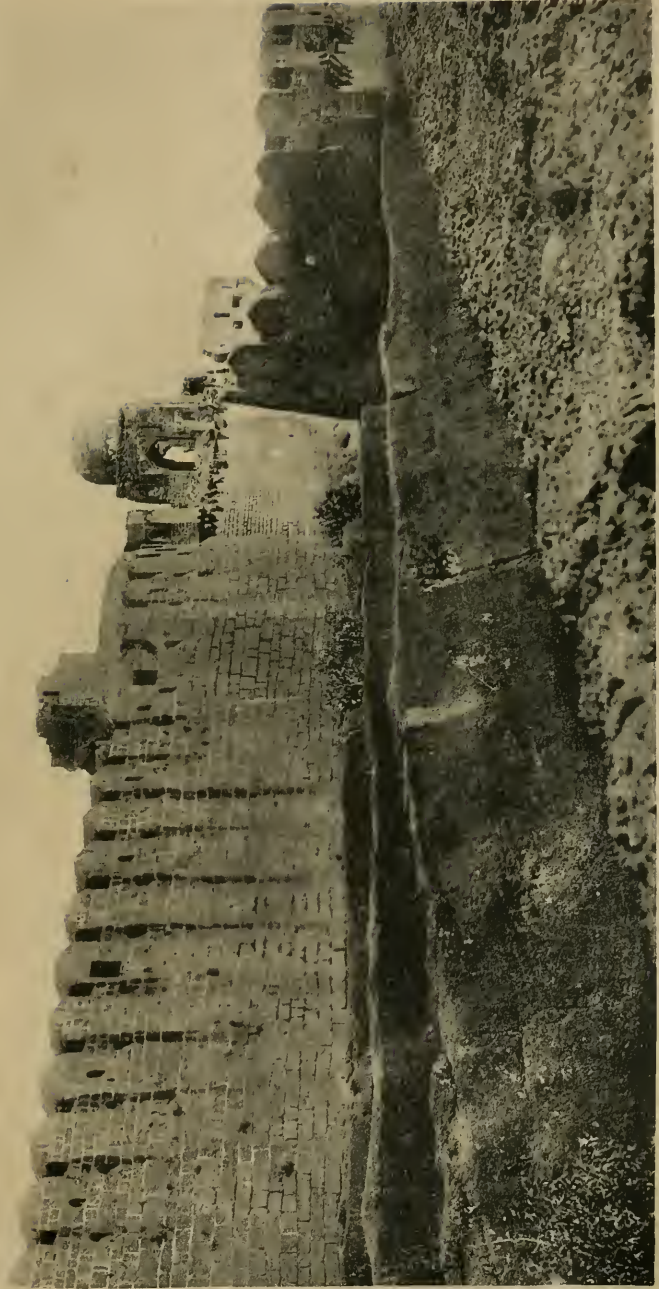
DS
486
B43 Y28
Atlas





BIDAR FORT: GUMBAD GATE.





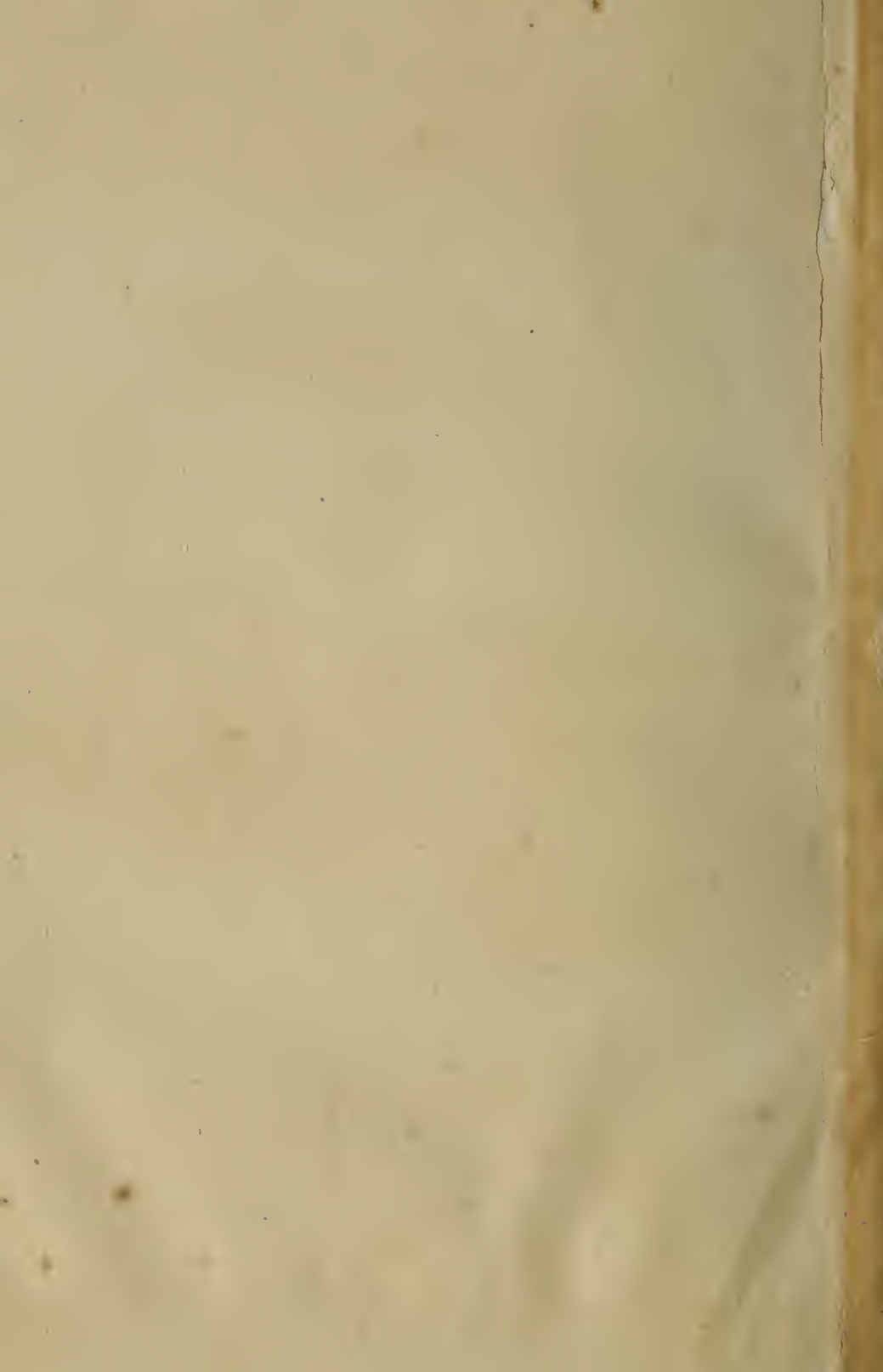
BIDAR FORT: ROCK-CUT WALLS OF TRIPLE DITCH.



a. BIDAR FORT: LARGE GUN.



b. THE SAME: LONG GUN.

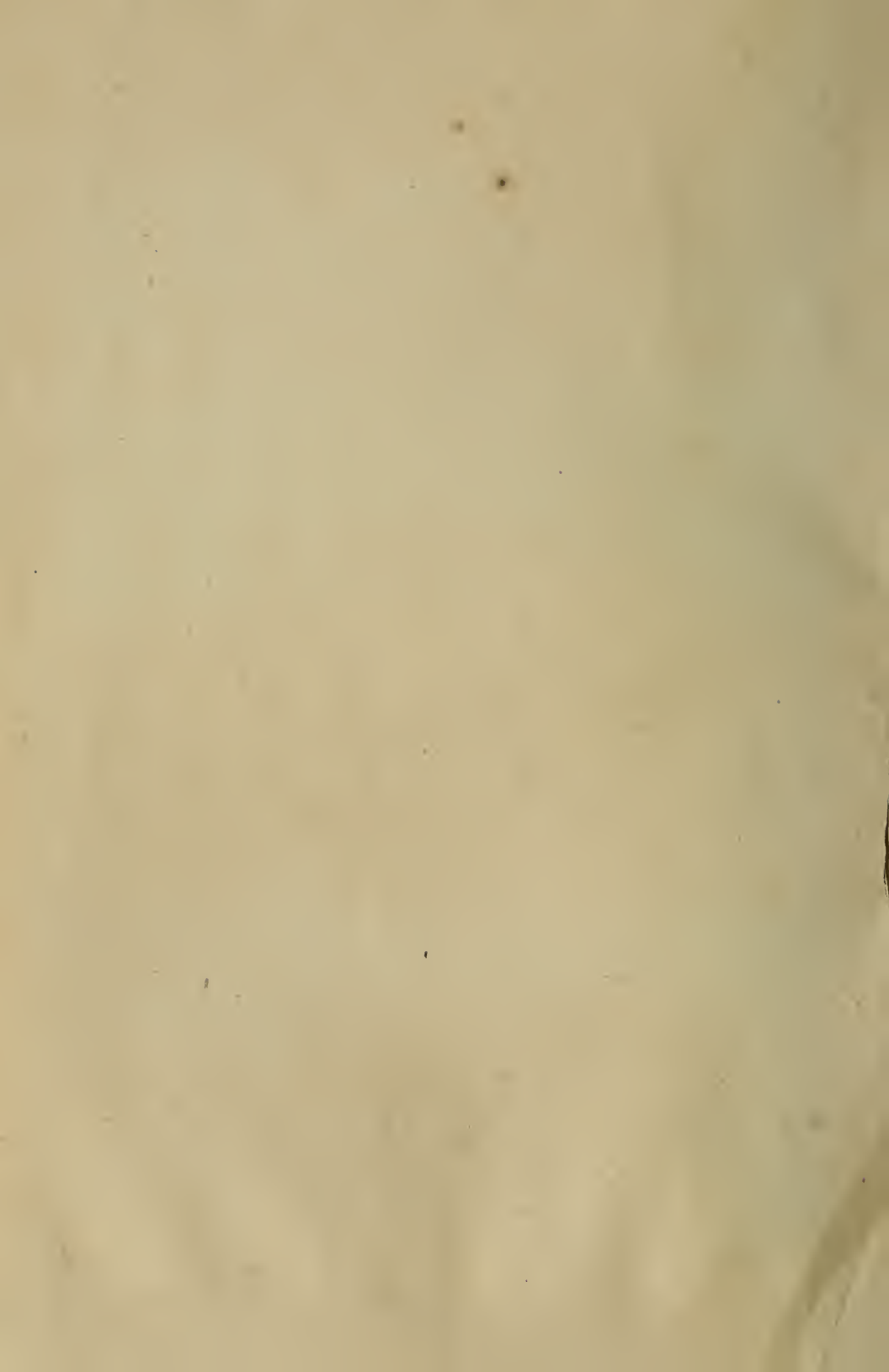


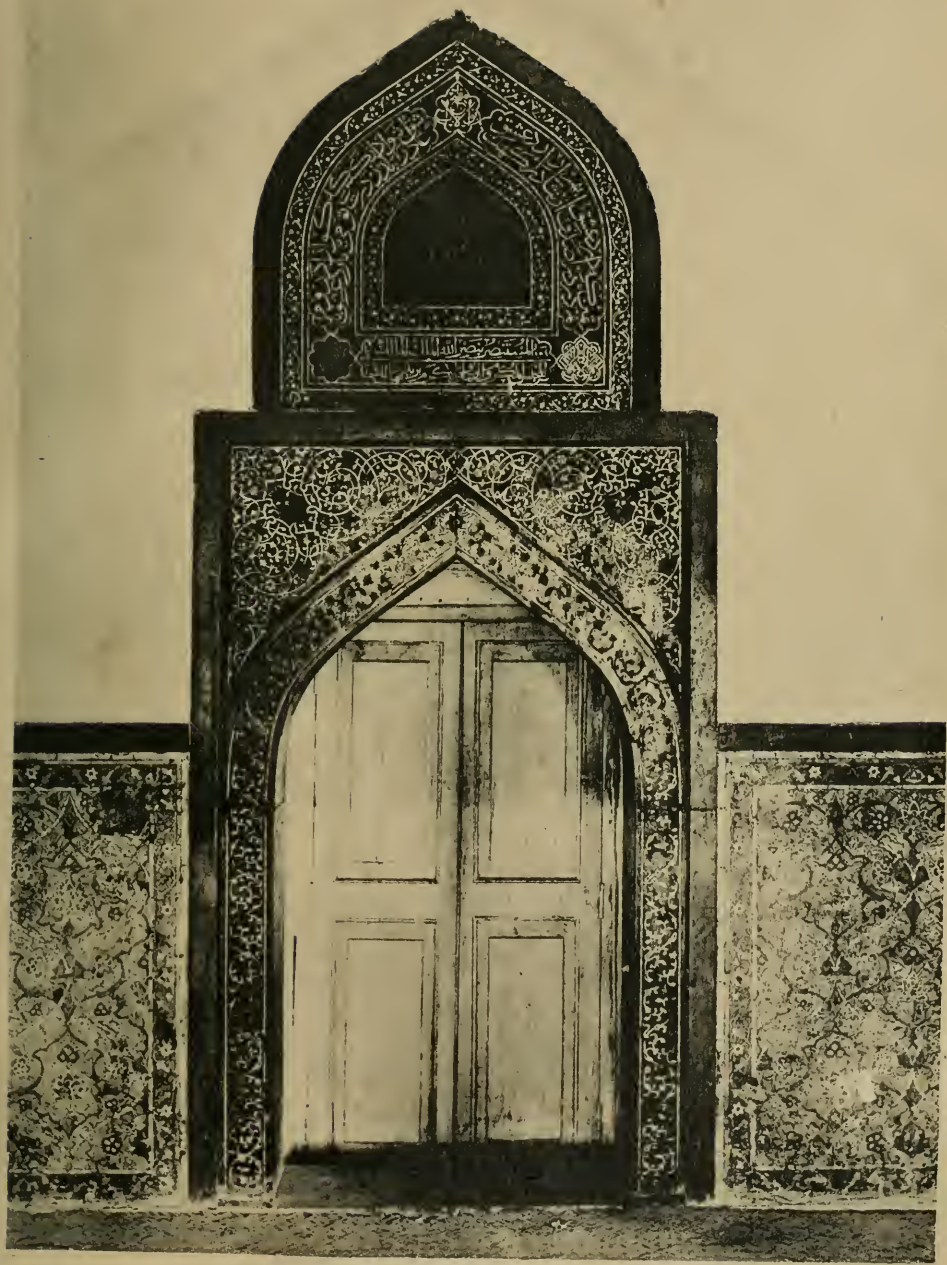


a. THE MALIK MAIDAN OF BIJAPUR.



b. THE LONG GUN OF GULBARGA.

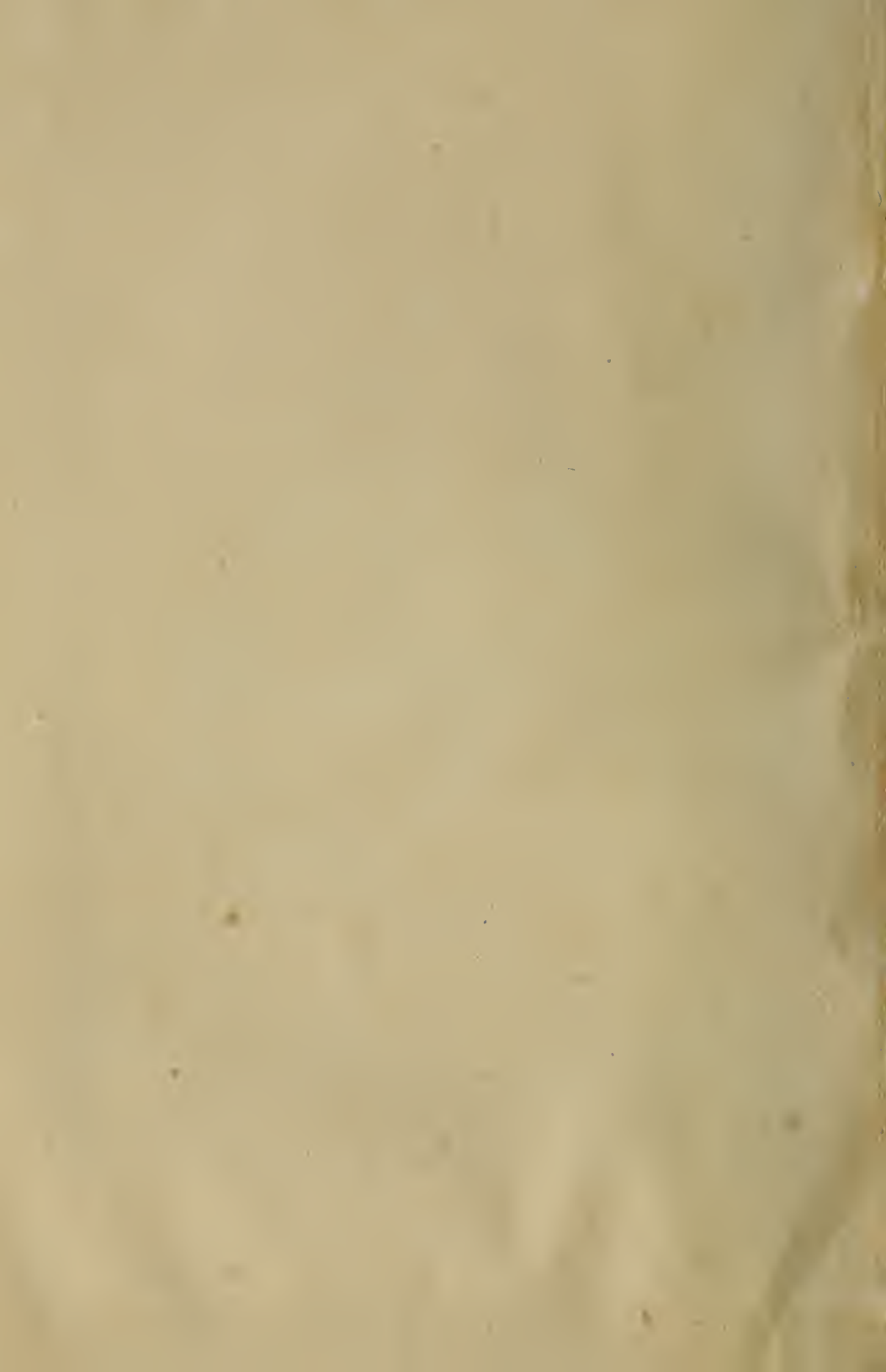




BIDAR FORT: RANGIN MAHAL.
MOTHER-OF-PEARL DECORATION.

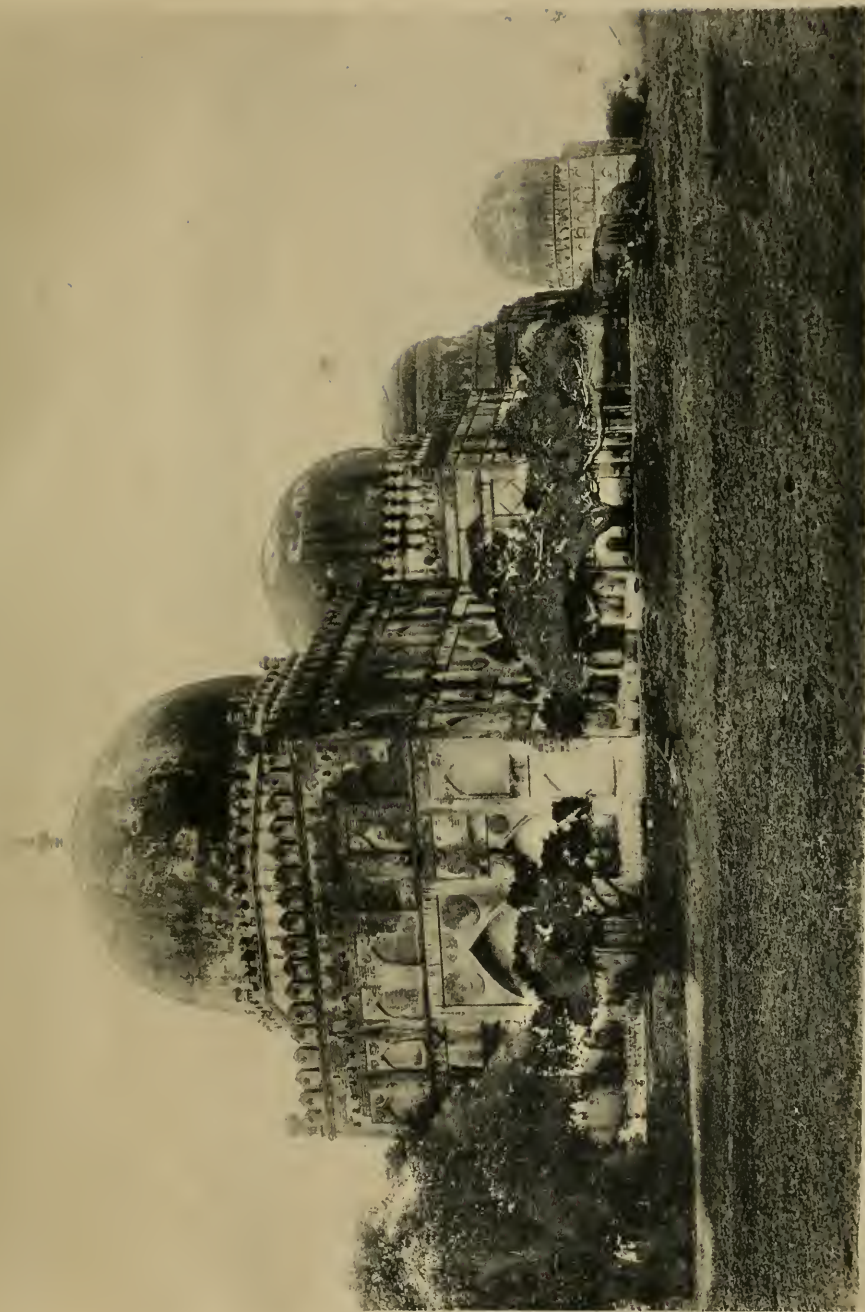


TOMB OF ALI BARID.





BIDAR FORT: SOLA KHAMB MOSQUE.

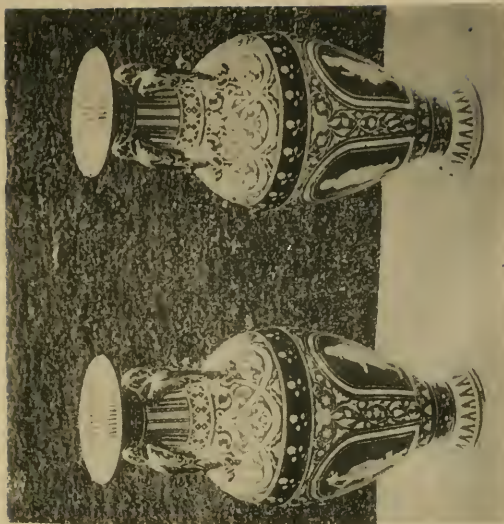


TOMBS OF BAHMANI KINGS: GENERAL VIEW.





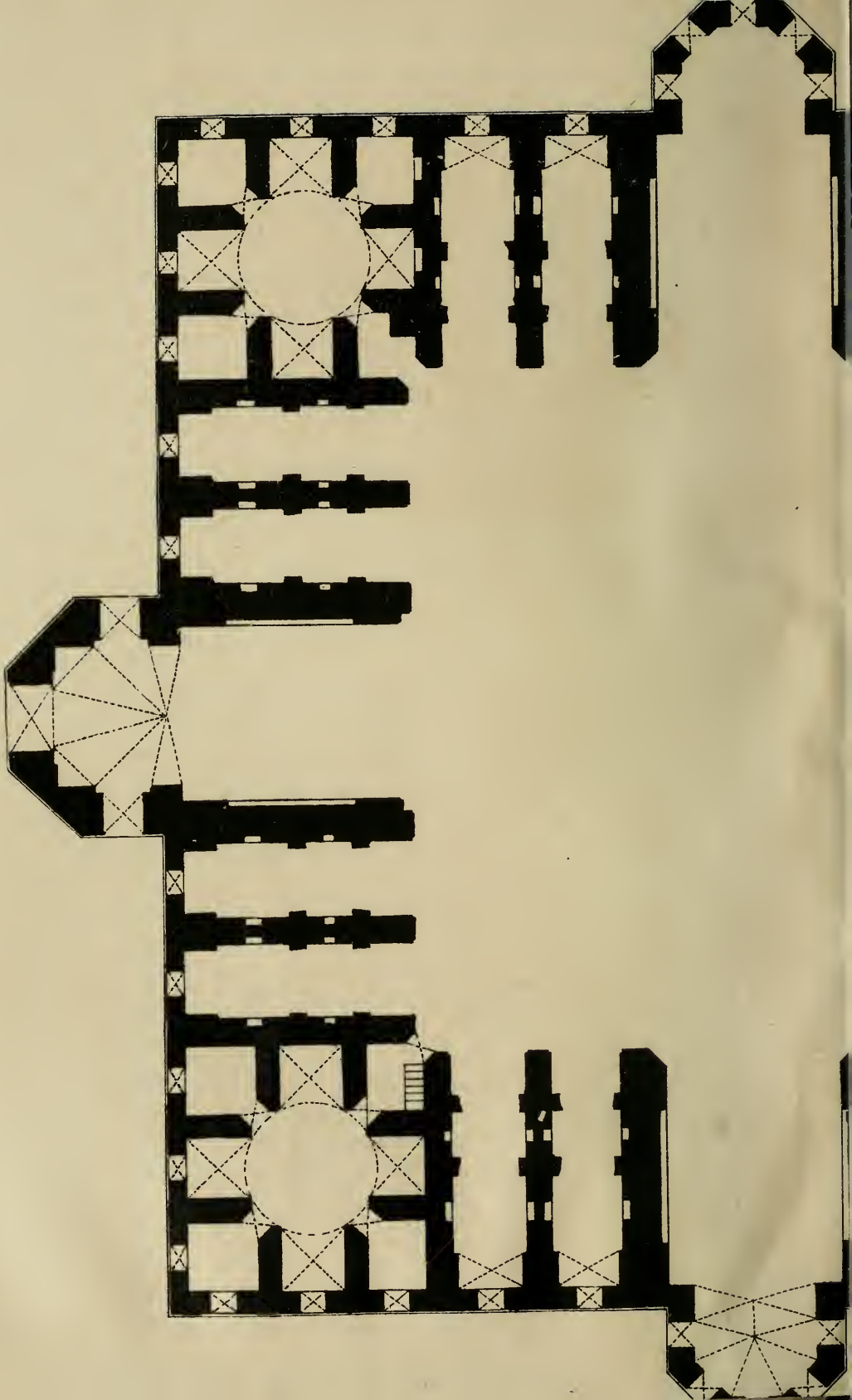
TOMB OF AHMAD SHAH WALI BAHMANI: CEILING.

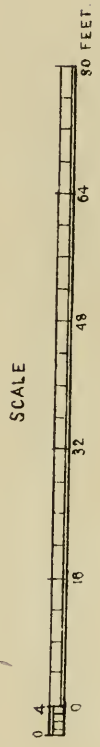
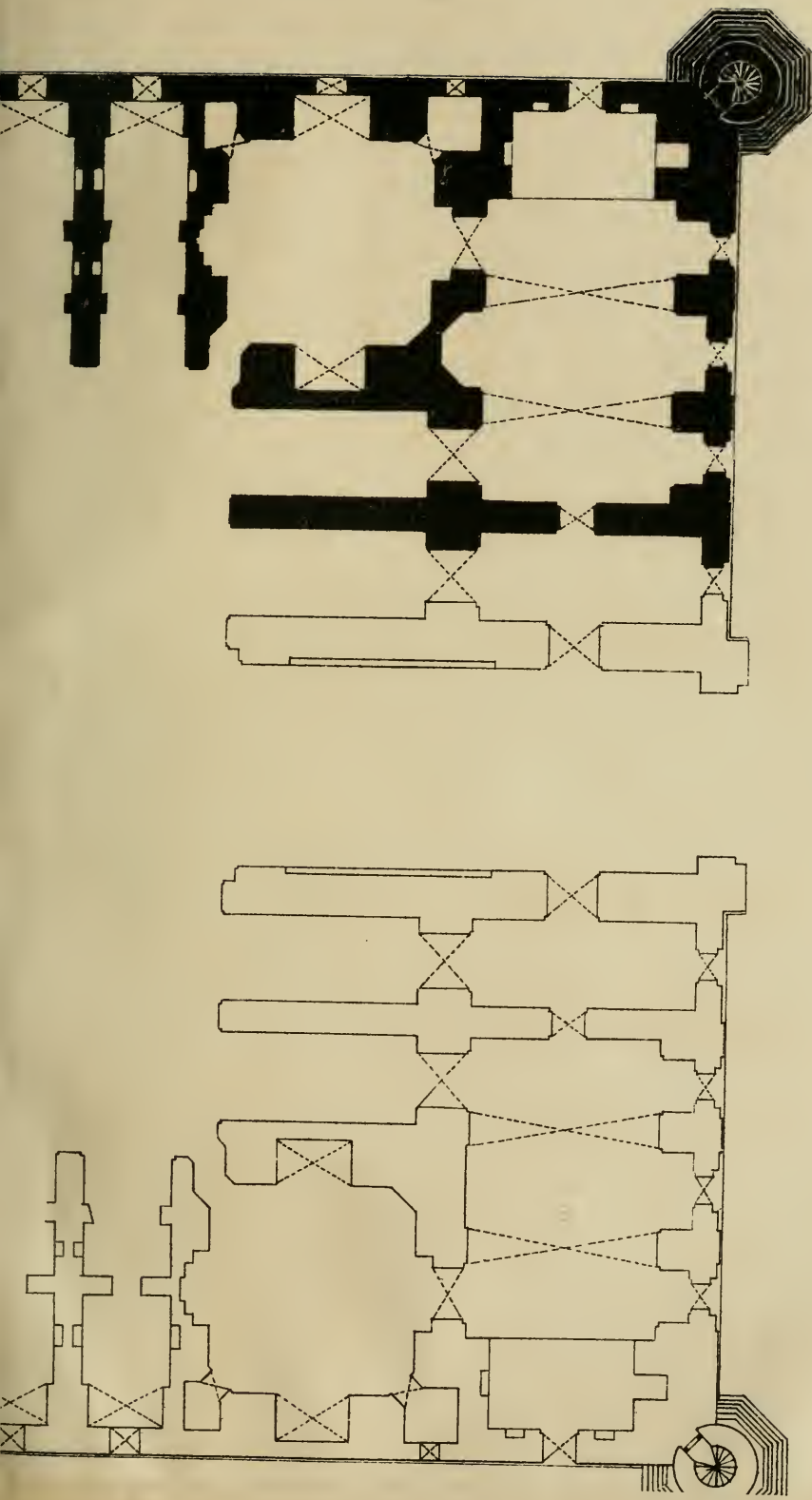


b. BIDAR-WARE: FLOWER VASES



a. BIDAR FORT: EARTHEN GUNPOWDER MEASURES.





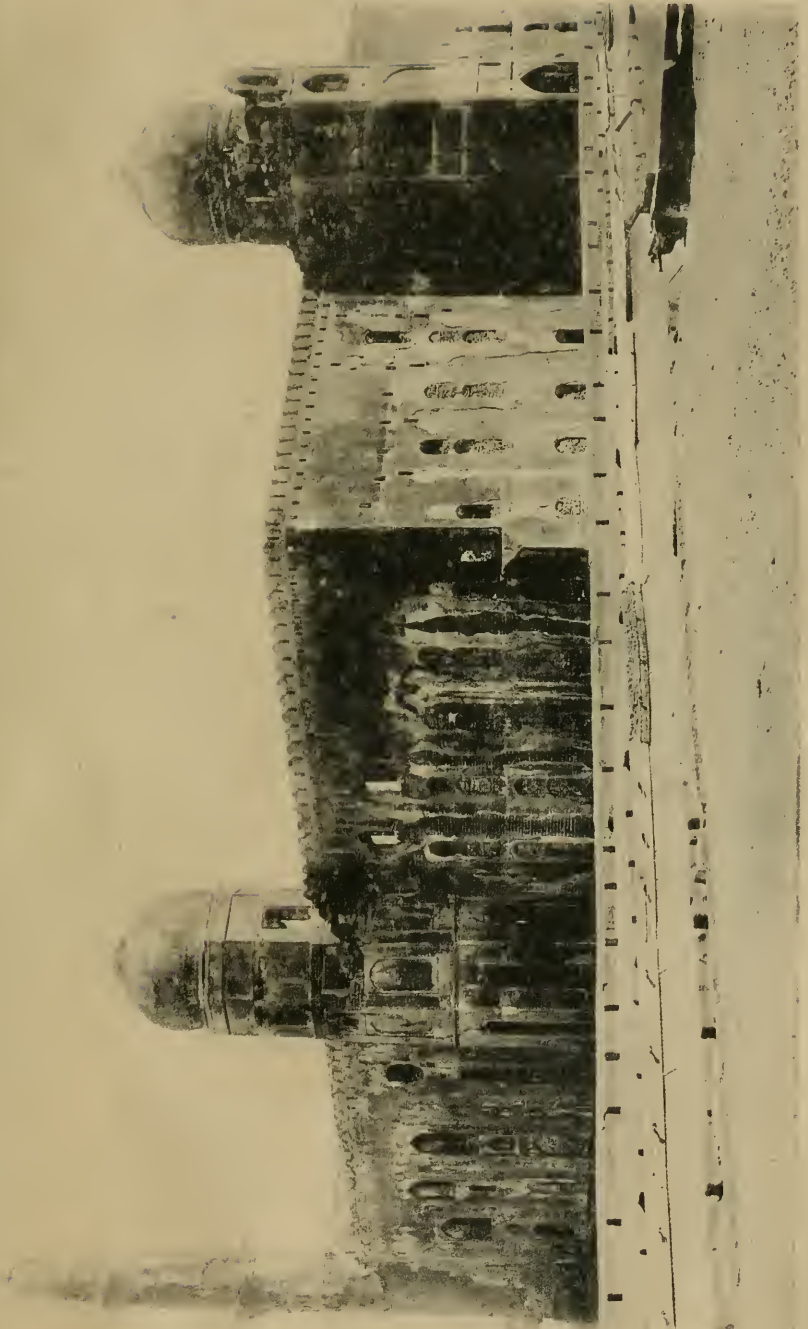
GROUND PLAN OF MADRASA.



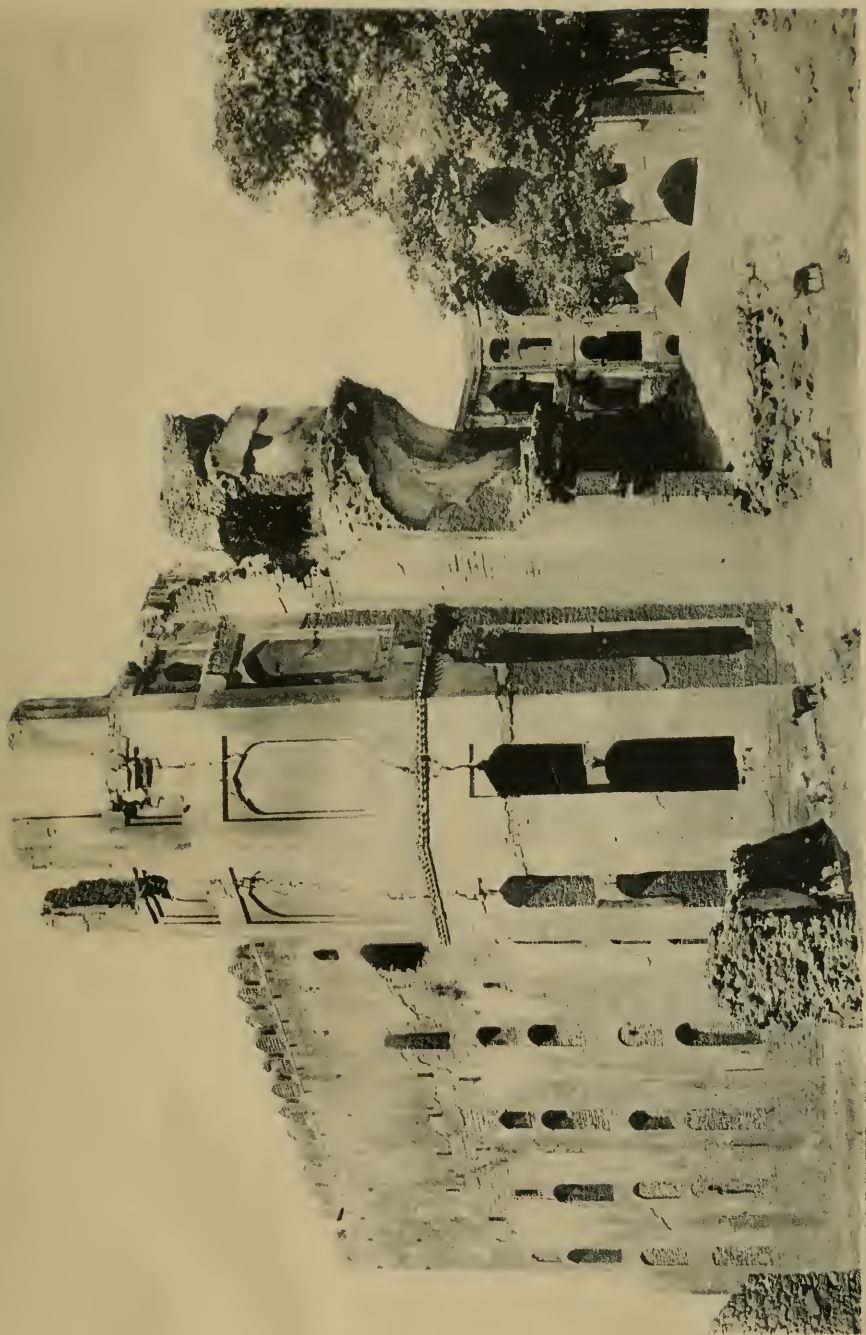
BIDAR MADRASA: NORTHERN END OF EAST FAÇADE.



BIDAR MADRASA :
NORTHERN END OF EAST FAÇADE (DETAIL).



BIDAR MADRASA. VIEW FROM NORTH-WEST.



BIDAR MADRASA. VIEW FROM SOUTH-EAST.



670



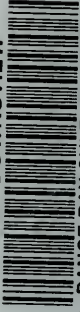
FL 17-10-09

DS Yasdani, Ghulam
486 The antiquities of Bidar
B43Y28
Atlas

PLEASE DO NOT REMOVE
CARDS OR SLIPS FROM THIS POCKET

UNIVERSITY OF TORONTO LIBRARY

UTL AT DOWNSVIEW



D RANGE BAY SHLF POS ITEM C
39 12 08 10 08 019 3